



# Panbio™ Covid-19 Ag Rapid Test Device



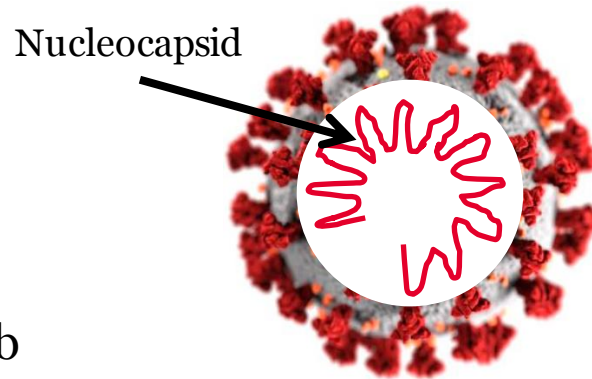
FOR EXTERNAL USE. Proprietary and confidential – do not distribute.

PANBIO™ COVID-19 AG RAPID TEST DEVICE

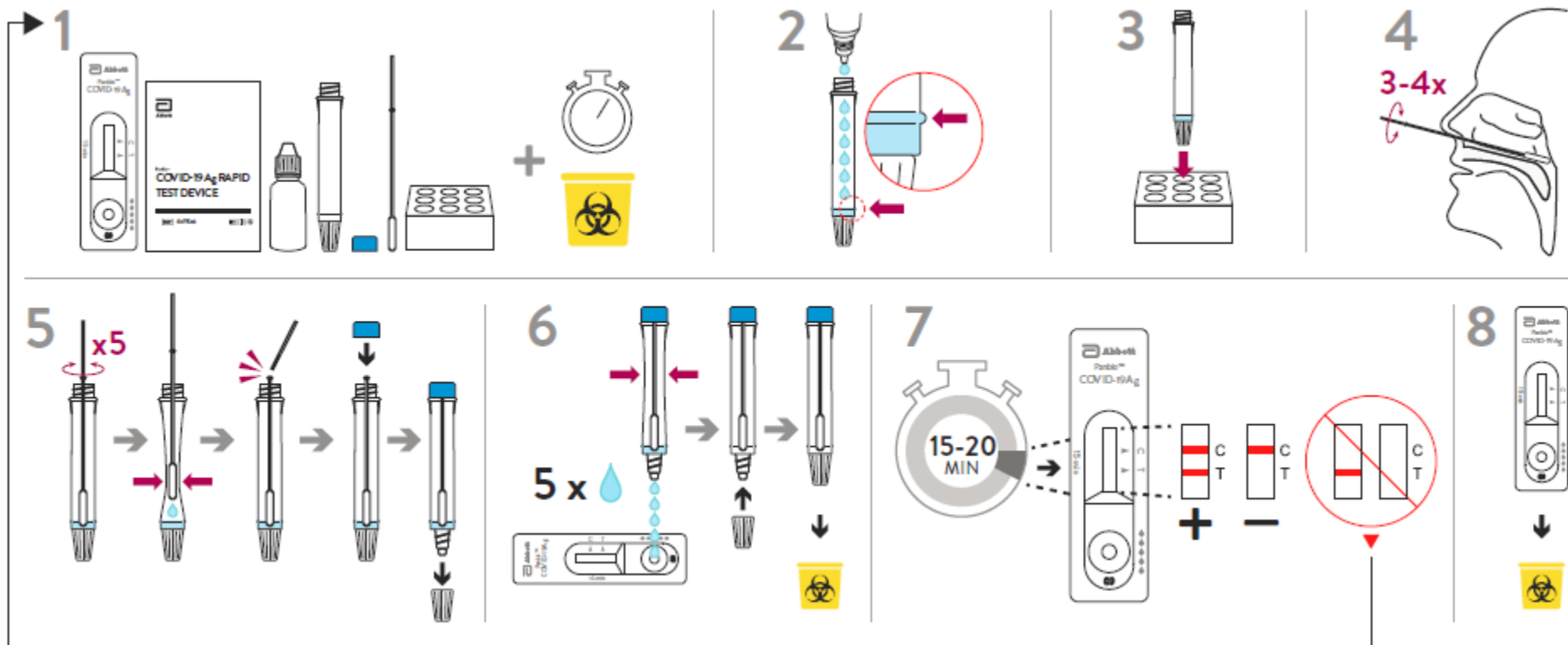
# Product Overview

# Panbio™ COVID-19 Rapid Test Device Specifications

- *In vitro* diagnostic rapid test for qualitative detection of SARS-CoV-2 antigen (Ag)
  - Targeting Nucleocapsid Proteins from SARS-Cov-2
  - Sensitivity: 93.3% (98.2% for samples with Ct values  $\leq 33$ )
  - Specificity: 99.4%
- 
- Storage: 2°C–30°C
  - CE Mark
  - Sample Type: Nasopharyngeal swab
  - Test Time: 15–20 MINUTES



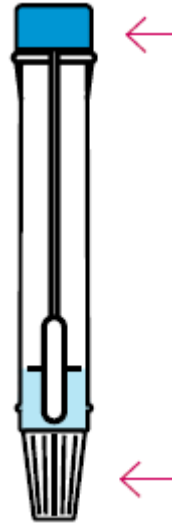
# Test Procedure



# Biohazard Containment Features Help Protect Staff



Special “break off” swab stays contained in tube, minimizing staff exposure



Safely dispose the fully enclosed extraction tube

PANBIO™ COVID-19 AG RAPID TEST DEVICE

# Clinical Results

# External Evaluation of Panbio™ COVID-19 Ag Rapid Test Device

## Panbio™ COVID-19 Ag Rapid Test Device vs. PCR

		PCR Test Result		
		Positive	Negative	Total
Panbio™ COVID-19 Ag Rapid Test Device Results	Positive	56	1	57
	Negative	4	180	184
	Total	60	181	241
		Sensitivity	Specificity	Overall Percent Agreement
		<b>93.3%</b> [83.8%; 98.2%]	<b>99.4%</b> [97.0%; 100.0%]	<b>97.9%</b> [95.2%; 99.3%]

Note: Positive agreement of the Panbio™ COVID-19 Ag Rapid Test Device is higher with samples of Ct values ≤33 with a sensitivity of 98.2%.



**Abbott**